

knot...kinker...naught

legato; loose

eldritch Priest

♩ = 64

Harmonica

mp-p

Guitar

mp-p

SAW

mp-p

ORgan

mp-p

2

Harm.

Guit.

Org.

senza

3

Harm.

Guit.

vibr. senza vibr.

Org.

4

Harm.

Guit.

Org.

5

Harm.

Guit.

Org.

senza

6

Harm.

Guit.

sul pont

vibr. ord.

Org.

7

Harm.

Guit.

Org.

senza vibr.

8

Harm.

Guit.

Org.

9

Harm.

Guit.

Org.

senza sul pont ord.

sul pont ord.

vibr.

10

Harm.

Guit.

Org.

sul pont ord.

vibr.

11

Harm.

Guit.

Org.

senza

Detailed description of the musical score for measures 11 and 12. Measure 11: The Harm. part consists of a single whole note chord. The Guit. part features a melodic line starting with a triplet of eighth notes, followed by a quarter note, then a triplet of eighth notes, and ending with a quarter note. The Org. part has a melodic line with a triplet of eighth notes. Measure 12: The Harm. part has a whole note chord. The Guit. part has a whole note chord. The Org. part has a whole note chord. The word 'senza' is written above the Guit. staff in measure 11.

12

Harm.

Guit.

Org.

Detailed description of the musical score for measures 12 and 13. Measure 12: The Harm. part has a whole note chord. The Guit. part has a whole note chord. The Org. part has a whole note chord. Measure 13: The Harm. part has a whole note chord. The Guit. part has a whole note chord. The Org. part has a whole note chord.

13

Harm.

Guit.

Org.

This musical score block covers measures 13 and 14. It is divided into three systems: Harp (Harm.), Guitar (Guit.), and Organ (Org.).
- **Measure 13:**

- Harp:** Features a whole note chord in the first half and a triplet of eighth notes in the second half.
- Guitar:** Contains a complex melodic line with multiple triplets and a quintuplet.
- Organ:** Mirrors the guitar's melodic line with a similar rhythmic pattern.

14

Harm.

Guit.

Org.

This musical score block covers measure 14.
- **Measure 14:**

- Harp:** Features a triplet of eighth notes in the first half and a whole note chord in the second half.
- Guitar:** Features a whole note chord in the first half and a whole note chord in the second half.
- Organ:** Features a whole note chord in the first half and a whole note chord in the second half.

15

Harm. 

Guit. 

 *senza*

Org. 

16

Harm. 

Guit. 

 *sul pont.* *vibr. ord.*

Org. 

17

Harm.

An empty five-line musical staff for the Harmonica instrument.

Guit.

A five-line musical staff for the guitar. It contains a melodic line with notes: D4, E4, F#4, G4, A4, B4, C5, B4, A4, G4, F#4, E4, D4. Fingerings are indicated: 3 for the first triplet (D4, E4, F#4), 5 for the second triplet (A4, B4, C5), and 5 for the final triplet (B4, A4, G4). There is a whole rest for the first measure.

A five-line musical staff for the guitar. It contains a melodic line with notes: D4, E4, F#4, G4, A4, B4, C5, B4, A4, G4, F#4, E4, D4. A bracket above the first four notes is labeled "4:3". There is a whole rest for the first measure.

Org.

A five-line musical staff for the organ. It contains a melodic line with notes: D4, E4, F#4, G4, A4, B4, C5, B4, A4, G4, F#4, E4, D4. Fingerings are indicated: 3 for the first triplet (D4, E4, F#4), 3 for the second triplet (A4, B4, C5), 3 for the third triplet (B4, A4, G4), and 5 for the final triplet (B4, A4, G4). There is a whole rest for the first measure.

18

Harm.

An empty five-line musical staff for the Harmonica instrument.

Guit.

A five-line musical staff for the guitar. It contains a melodic line with notes: D4, E4, F#4, G4, A4, B4, C5, B4, A4, G4, F#4, E4, D4. A bracket above the last three notes is labeled "3:1". There is a whole rest for the first measure.

A five-line musical staff for the guitar. It contains a melodic line with notes: D4, E4, F#4, G4, A4, B4, C5, B4, A4, G4, F#4, E4, D4. A bracket above the last three notes is labeled "3:1". There is a whole rest for the first measure.

Org.

A five-line musical staff for the organ. It contains a melodic line with notes: D4, E4, F#4, G4, A4, B4, C5, B4, A4, G4, F#4, E4, D4. A bracket above the last three notes is labeled "3:1". There is a whole rest for the first measure.

19

Harm.

Guit.

Org.

21

Harm.

Guit.

Org.

24


Harm. 

Guit. 




Org. 

25

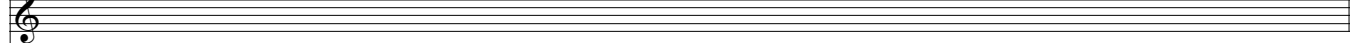
Harm. 

Guit. 



Org. 

Harm.



Guit.



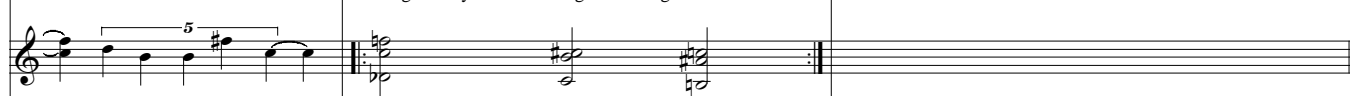
Org.



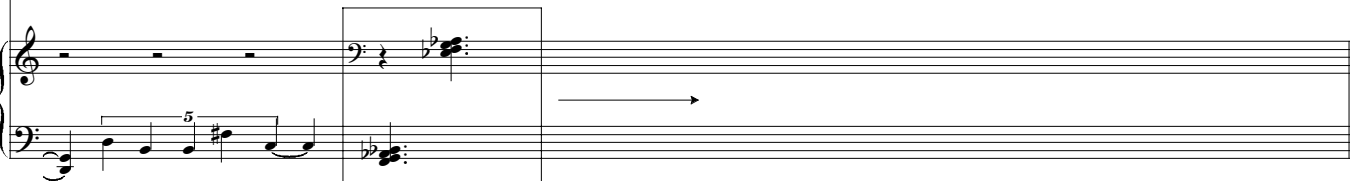
Harm.



Guit.



Org.



28

Harm.  
Guit. 

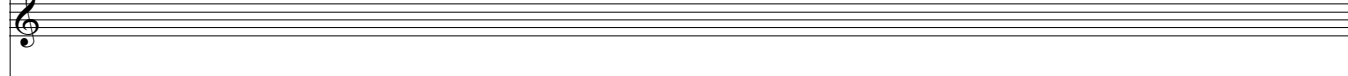
Org. 

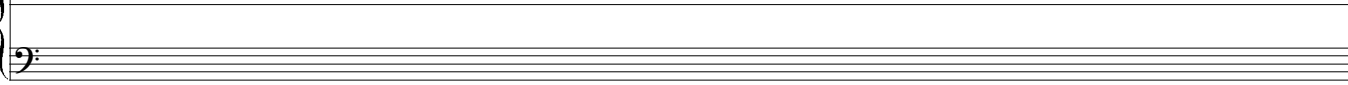
29

Harm.  
Guit. 

Org. 

30

Harm.  
Guit. 

Org. 

31

Harm.

Guit.

Org.

32

Harm.

Guit.

Org.

33

Harm.

Guit.

Org.

34

Harm.

Guit.

Org.

35

Harm.

Guit.

Org.

36

Harm.

Guit.

Org.